

THE *b*ase
RISE



Uniquely Your Story

Uniquely Yours

专属您的独特故事

Uniquely Your Story

Uniquely Yours

每天都在灿烂的阳光中迎接新的一天，
每一个黎明都激励着生活...

THE BASE Rise 位于普吉市的度假中心，地理位置优越。
从市中心的咖啡馆和热门的冲浪点，
到池畔日光浴和家中的轻松健身，
一切都如此轻松享受。

探索每一天的新奇和自由，创造属于自己的新故事。



设计理念

海上日出美景

灵感源自清晨的日出现象，
独特的设计理念贯穿于内外建筑元素。
建筑的渐变色调与美丽的日出相互呼应，
设计色彩与设计借鉴了普吉岛特有的日出景象。
配备度假风格的公共设施，
让您每天都能享受惬意的生活。



完美的地理位置

周边生活设施完善便利，
包括购物中心、零售中心、国际学校和医院

2
分钟

在尚泰普吉购物中心
畅享时尚购物

15
分钟

在普吉古镇
演绎独特故事

25
分钟

在巴东海滩
体验海边休闲时光

项目信息

项目地址：普吉府，普吉市，Wichit区

占地面积：约4,800平方米

项目类型：2栋8层公寓大楼

总户数：326户

停车位比例：45%

公共设施

- 24小时自动收货机
- 外卖送餐取餐点
- 邮件/包裹室
- 共享工作区和休息区
- 自助洗衣房
- WIFI覆盖大堂及共享工作区
- 物业办公室
- 游泳池
- 健身房
- 其它公共区域：
户外工作区、日光浴露台和公共花园等。

其它设施

- LIV24小时中央监控/24小时安保服务
- 24小时闭路监控系统(CCTV)
- 停车位
- EV车电子充电桩



户型

面积(平方米)

1室 (S)

24.75 - 25.75

1室 (M)

30.50 - 31.50

1室 (Plus)

34.25 - 35.25

公共设施



日出泳池 & 日光浴空间

在自然中放松身心

灵感来自隐秘岛屿的宁静，
宽敞的泳池设计独特，
池底有阳光波纹图案。
在美丽花园的茂密树荫下，
随意放松、晒太阳、阅读或更新社交媒体。



温馨大堂

在这里感受到最温暖的欢迎

体验奢华热带海滩装饰风格的温暖与活力，独特的色彩和图案营造出轻松的氛围，让人仿佛置身喧哗城市之外的私人海滩。





微风露台

在自然中焕发活力 迎接无限挑战

宛如亲临海边，在广阔的休闲区，
伴随棕榈树的轻轻摇曳，
让池边溢流的波浪旋律抚慰您，
鲜艳的家具有增添了几分俏皮。
感受放松，
让思绪游荡，
仿佛置身于清新的世外桃源。



珊瑚健身房

活力健身 燃烧激情

无论是塑形肌肉，还是有氧运动，在这里都可以找到最佳的锻炼体验。健身房以水下世界为背景，周围环绕着色彩斑斓的珊瑚壁画，点燃您的能量与激情。透过窗外，您还能欣赏到美丽的花园景色，让每一次锻炼都更加愉悦与充实。



独立共享工作空间

在独处中获得专注与清晰

为您提供寻找工作灵感的私密空间，
尽享美丽自然景观，
无限激发您的创意灵感。



休闲空间

在热带环境中放松身心

没有计划的日子还能有什么更好的选择吗？
在这里，找到完美的空间。
躺在舒适的沙发上，
感受海滩泡沫曲线的舒缓线条，
欣赏日出泳池的美景，
整天与自然的宁静融为一体。



热带共享工作空间

自由工作 随心所欲

无论是在书桌前，还是在舒适的沙发上。
无论是处理项目，还是主持会议，
选择权永远在您手中。

楼层图



1st FLOOR PLAN



2nd FLOOR PLAN





3rd FLOOR PLAN



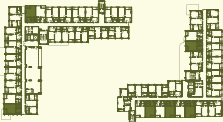
4th FLOOR PLAN



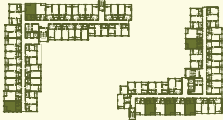
户型图

1A

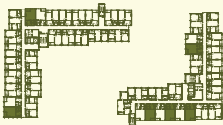
24.75 - 25.75 SQ.M.



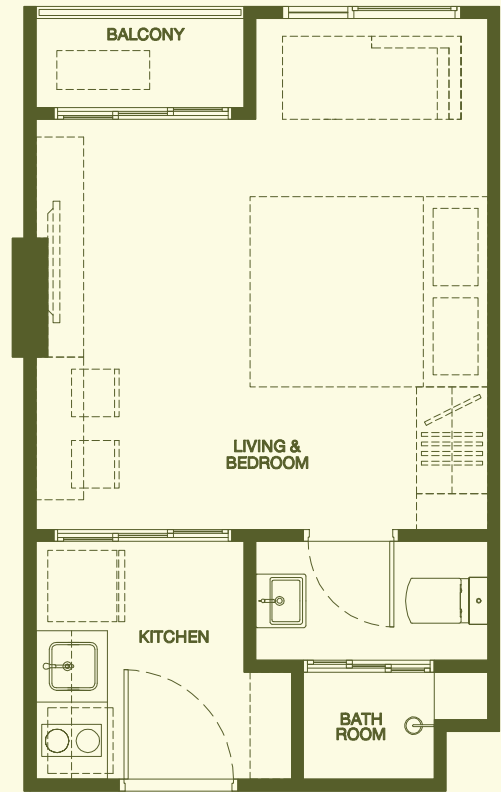
2nd Floor Plan



3rd Floor Plan

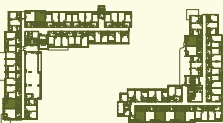


4 - 8th Floor Plan

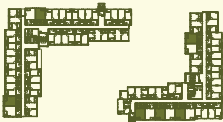


1AM

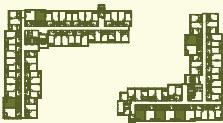
24.75 SQ.M.



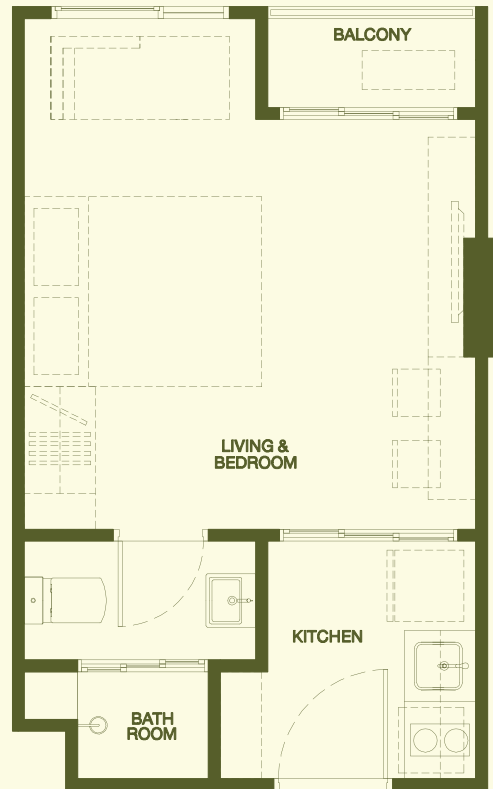
2nd Floor Plan



3rd Floor Plan



4 - 8th Floor Plan

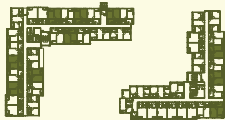


1B

30.50 - 31.00 SQ.M.



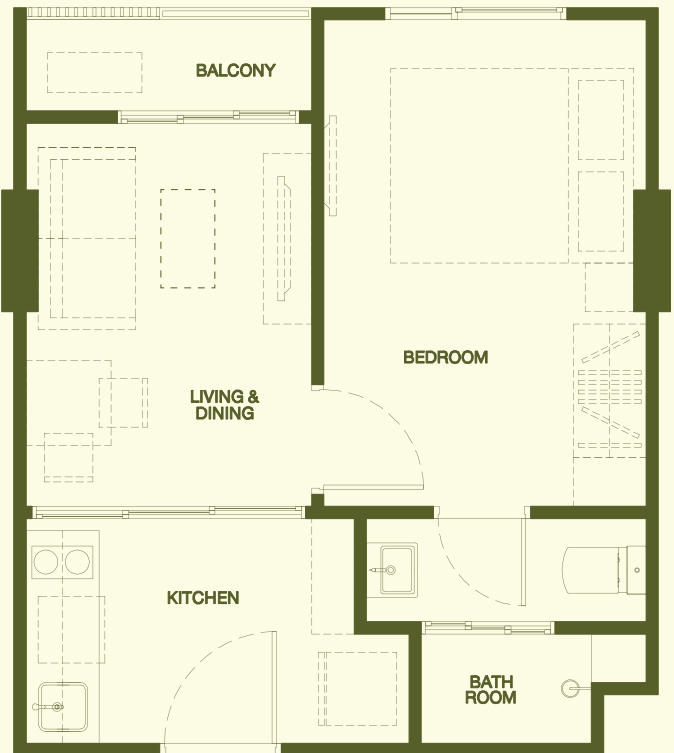
2nd Floor Plan



3rd Floor Plan



4 - 8th Floor Plan

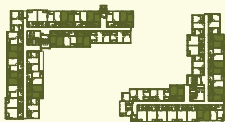


1BM

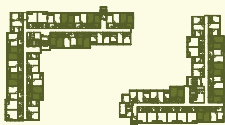
30.50 - 31.50 SQ.M.



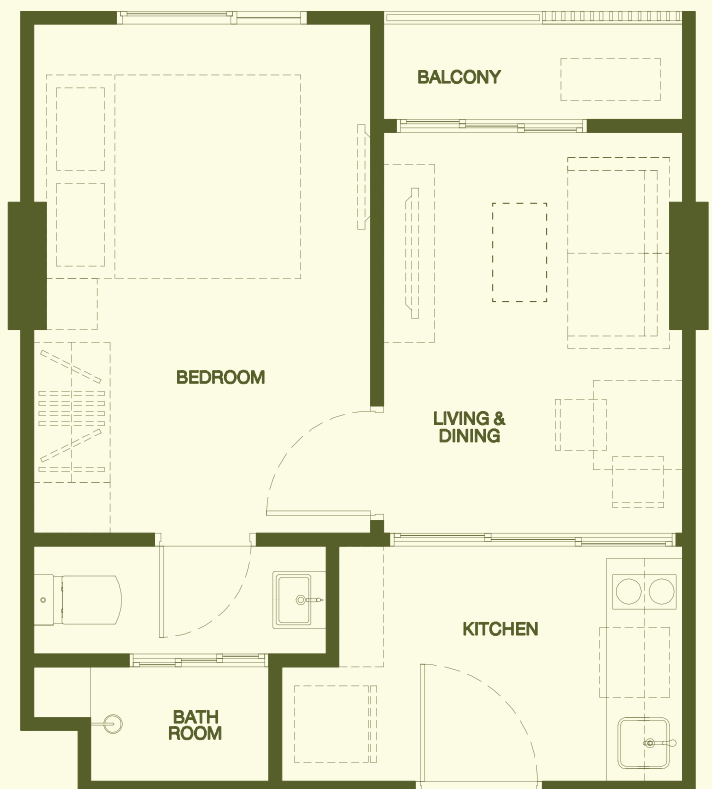
2nd Floor Plan



3rd Floor Plan

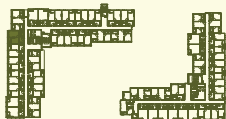


4 - 8th Floor Plan

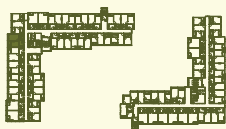


1B - 1

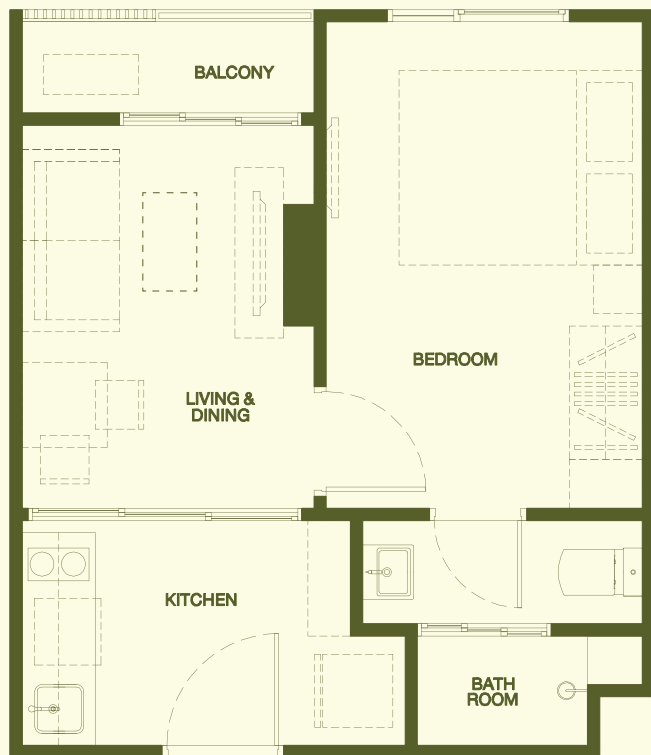
30.50 SQ.M.



3rd Floor Plan

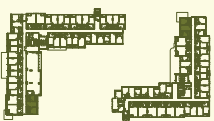


4 - 8th Floor Plan

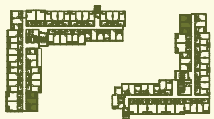


1C

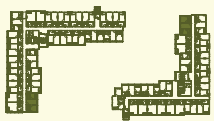
34.50 - 34.75 SQ.M.



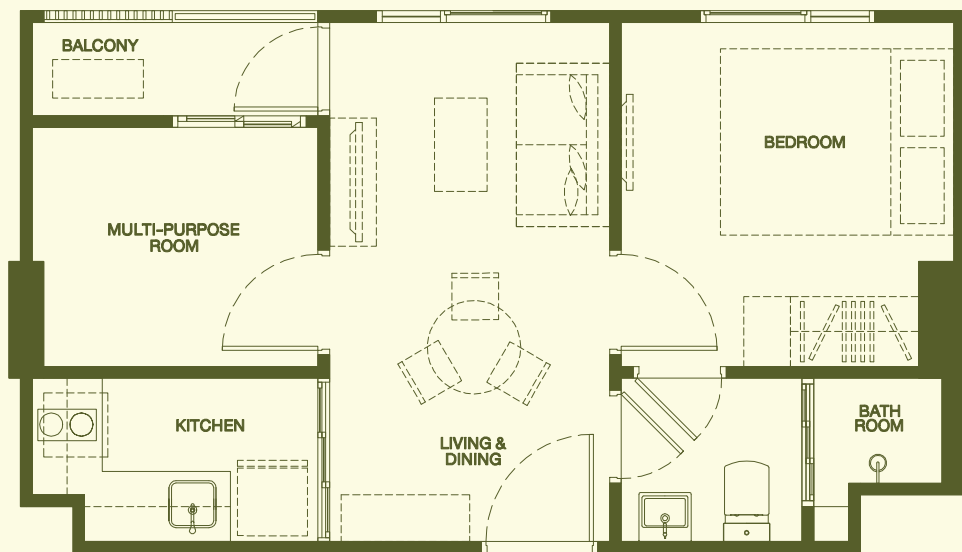
2nd Floor Plan



3rd Floor Plan

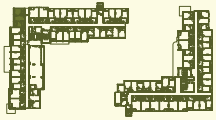


4 - 8th Floor Plan

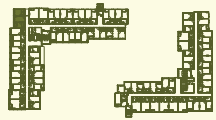


1C - 1

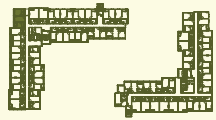
34.75 SQ.M.



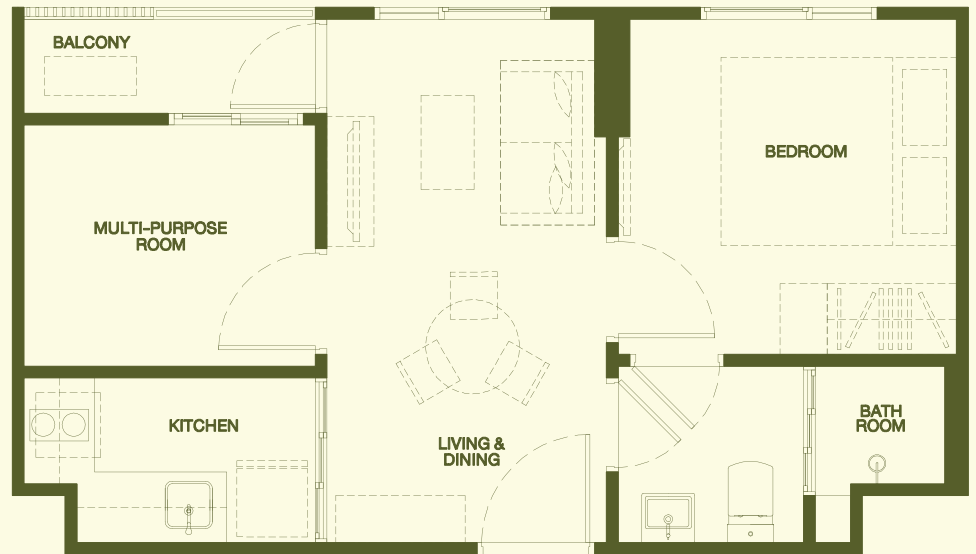
2nd Floor Plan



3rd Floor Plan

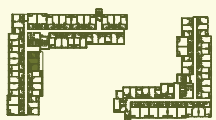


4 - 8th Floor Plan

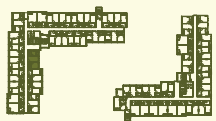


1C - 2

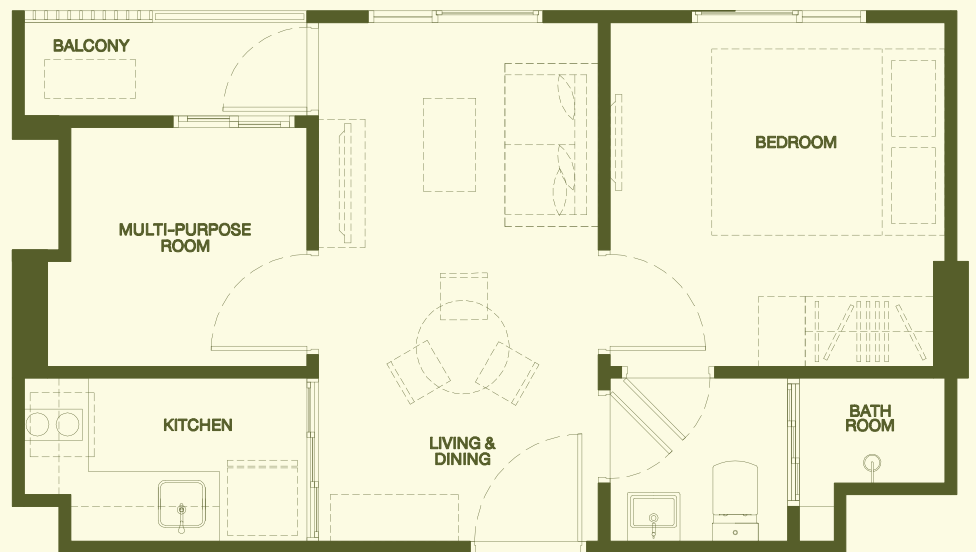
34.75 SQ.M.



3rd Floor Plan

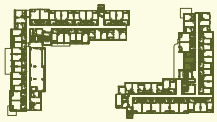


4 - 8th Floor Plan

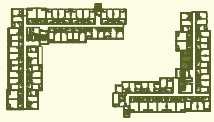


1CM

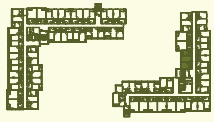
34.25 SQ.M.



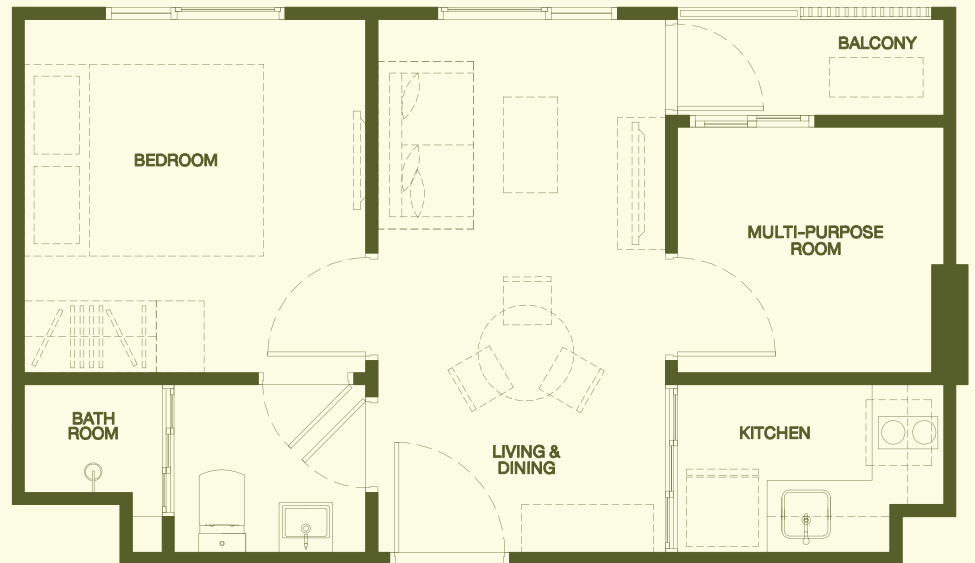
2nd Floor Plan



3rd Floor Plan

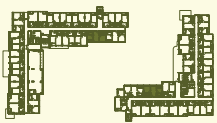


4 - 8th Floor Plan

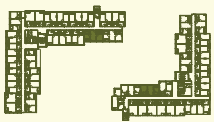


1CM - 1

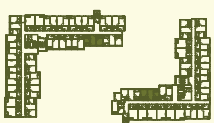
35.25 SQ.M.



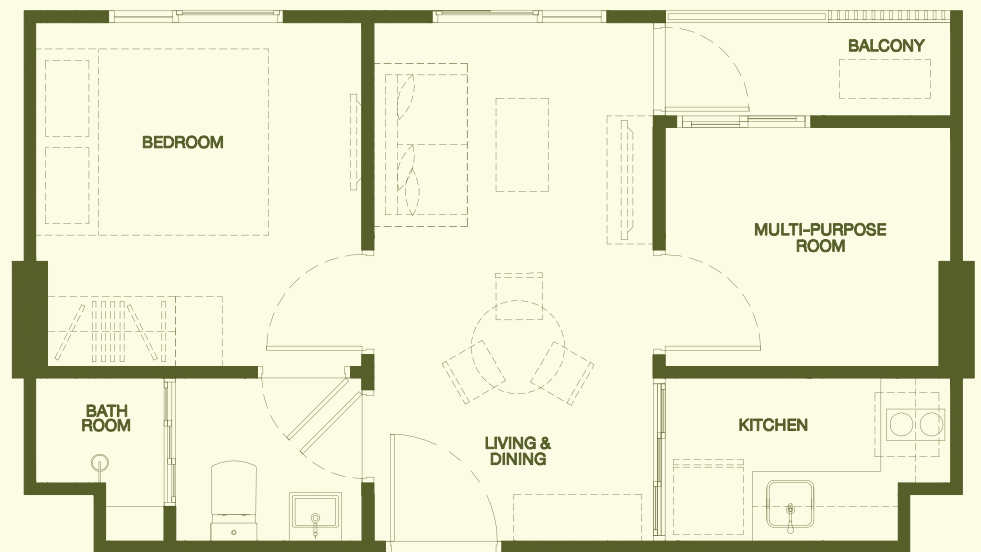
2nd Floor Plan



3rd Floor Plan

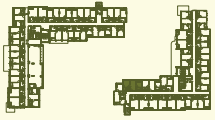


4 - 8th Floor Plan

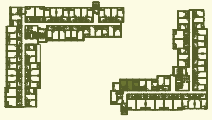


1CM - 2

35.25 SQ.M.



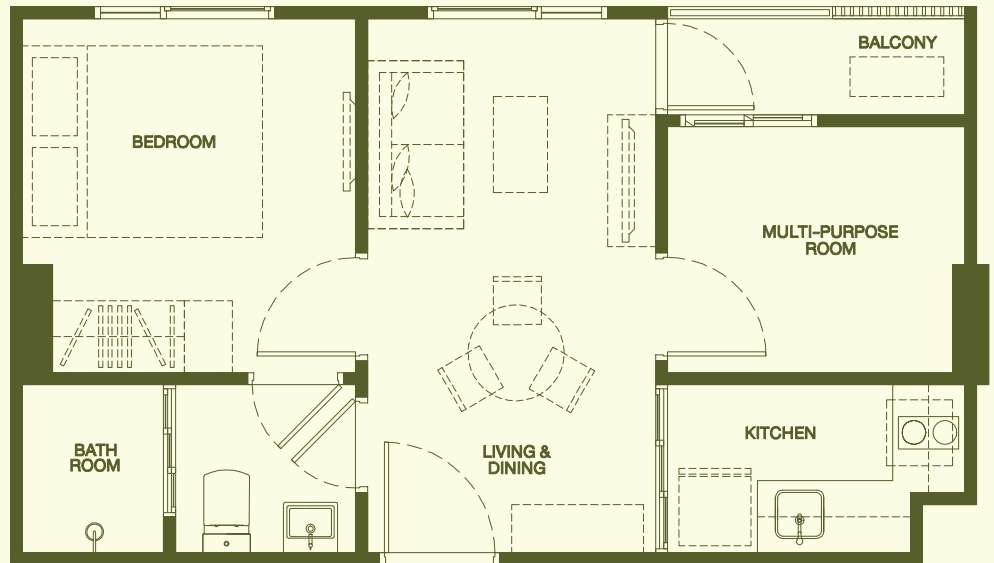
2nd Floor Plan



3rd Floor Plan

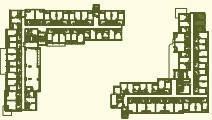


4 - 8th Floor Plan

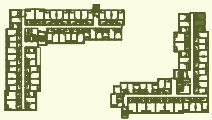


1CM - 3

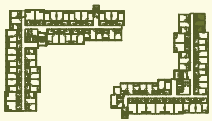
34.75 SQ.M.



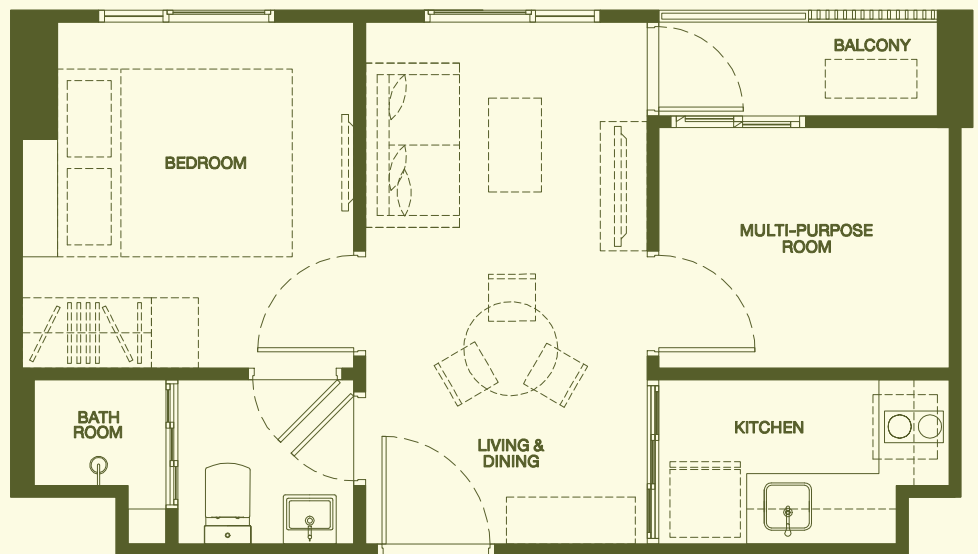
2nd Floor Plan



3rd Floor Plan



4 - 8th Floor Plan



1CM - 4

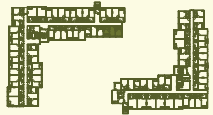
34.75 SQ.M.



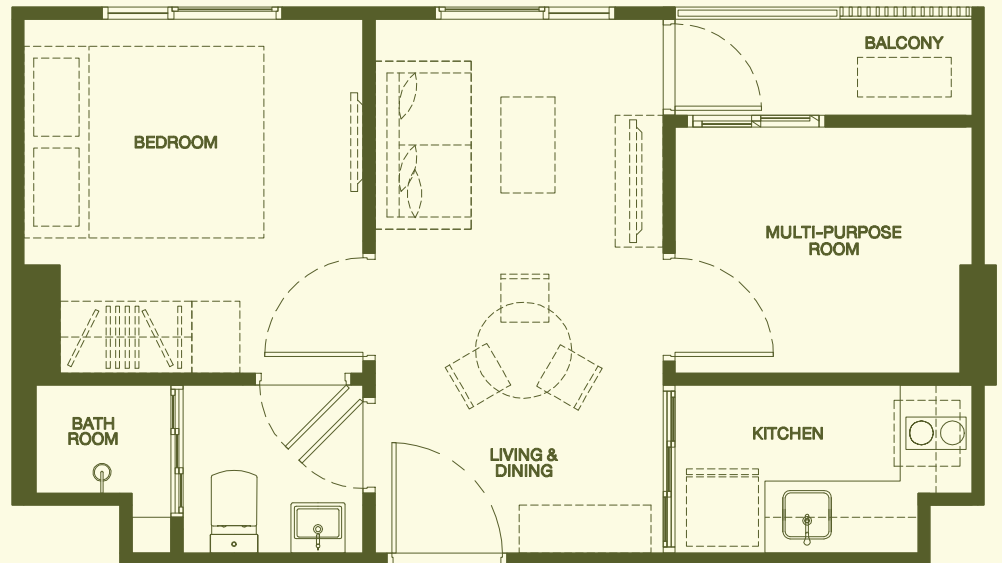
2nd Floor Plan



3rd Floor Plan

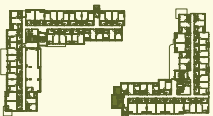


4 - 8th Floor Plan

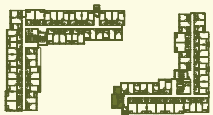


1D

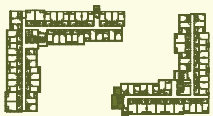
35.25 SQ.M.



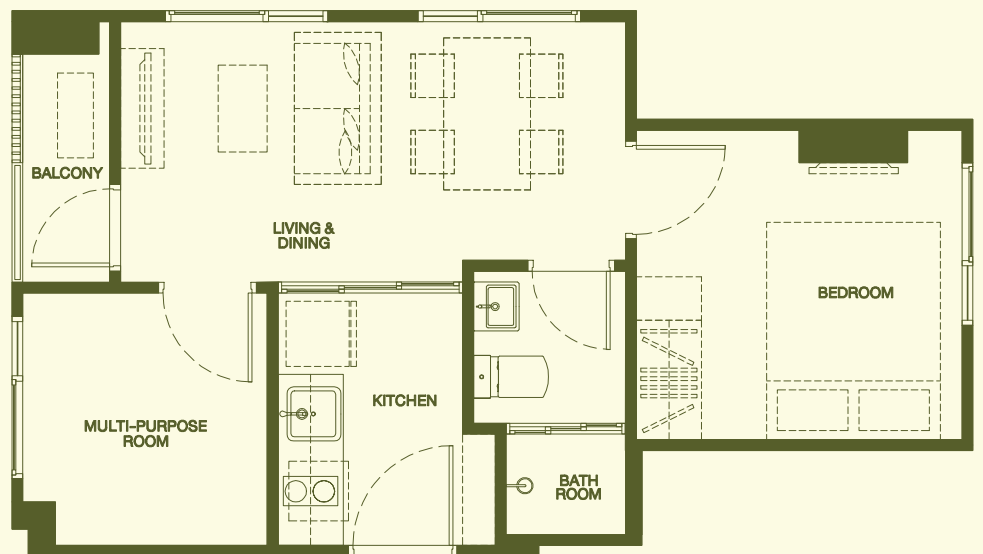
2nd Floor Plan



3rd Floor Plan



4 - 8th Floor Plan



THE *b*ase
RISE

 SANSIRI

[sansiri.com](https://www.sansiri.com)

Project Owner: Arnawat Company Limited, Registration No. 0105546144865. Head Office: 59 Soi Rim Klong Phra Khanong, Phra Khanong Nuea Subdistrict, Watthana District, Bangkok 10110. Registered Capital: 10,000,000 baht; Paid-up Capital: 2,500,000 baht (as of 7 Nov. 2023). Managing Director: Mr. Uthai Uthaisangsuk, The Base Rise Project. Title Deeds No. 116225, 118328, 116251 on approximately 3 rai. Location: Wichit Subdistrict, Mueang Phuket District, Phuket Province. Description: 8-storey condominium, 2 buildings, totalling 326 rooms. The land and condominium are mortgaged with a financial institution. Project Status: Environmental Impact Assessment (EIA) received, construction permit in the application process. Timeline: Construction begins in February 2024, with expected completion by August 2025, followed by Condominium Registration when co-owners are required to pay funds, common fees, taxes, and charges as determined by the project owner/condominium juristic person according to Condominium Law. Featured photography on website consists of simulated atmosphere and simulated graphic. Should you have any questions regarding any photography, please contact our customer service staffs or visit our projects' site. Call 1685. Terms & conditions apply.